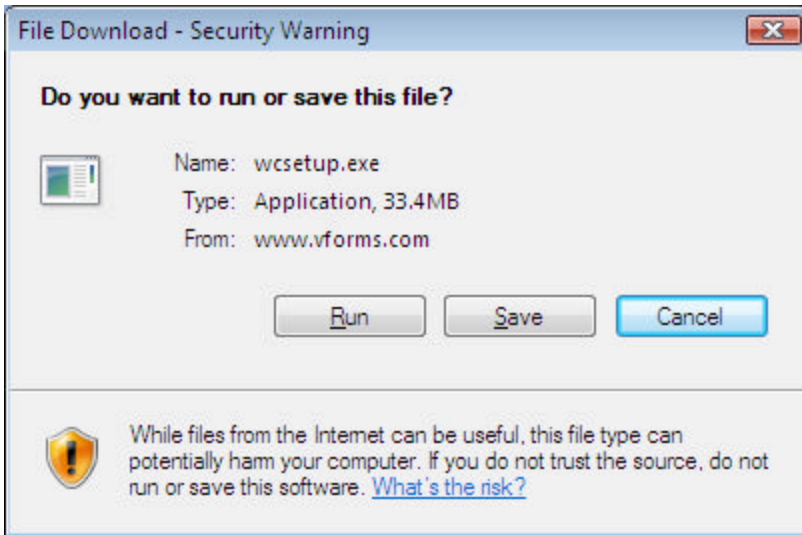


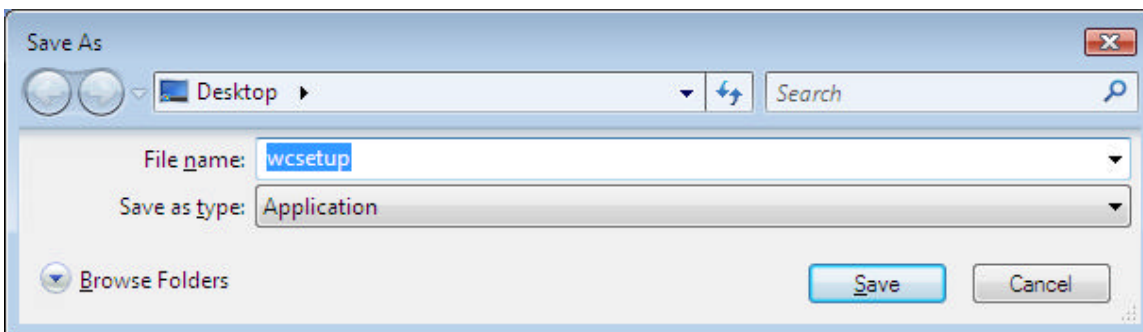
Microsoft Vista computer Users--Installing and opening WorkCenter from vForms:

Vista from Microsoft is defaulted to certain security issues regarding any programs loaded under the “My Program” directory.

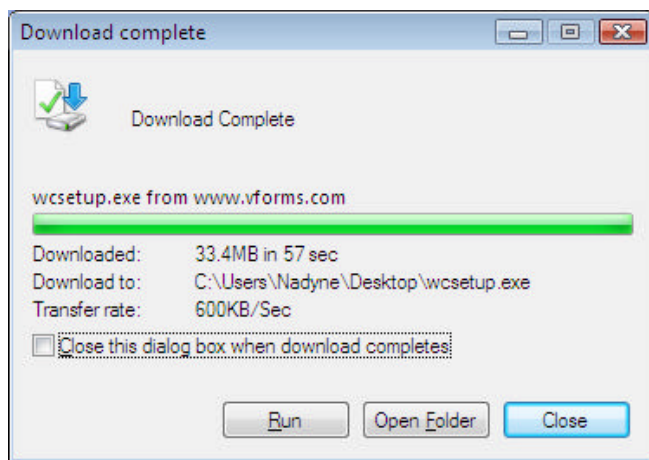
1. When you install WorkCenter on your computer, you will see the following popup box appear:



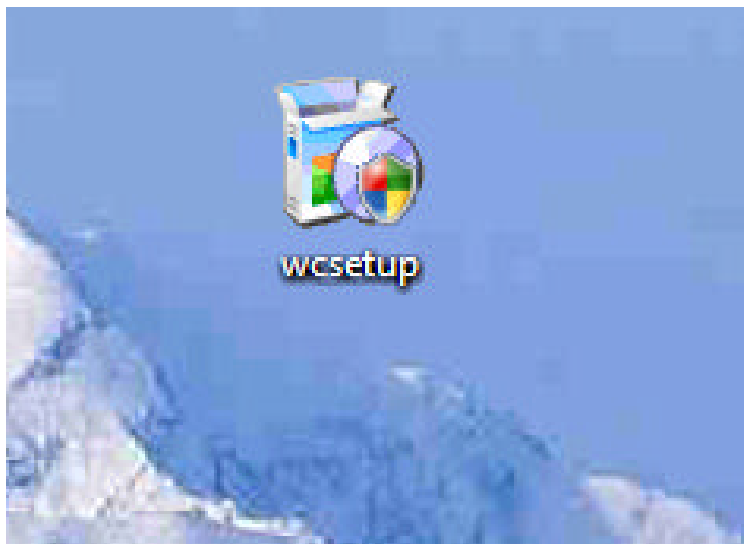
2. Vista users should select “Save” and then direct the download to your desktop screen view as shown below:



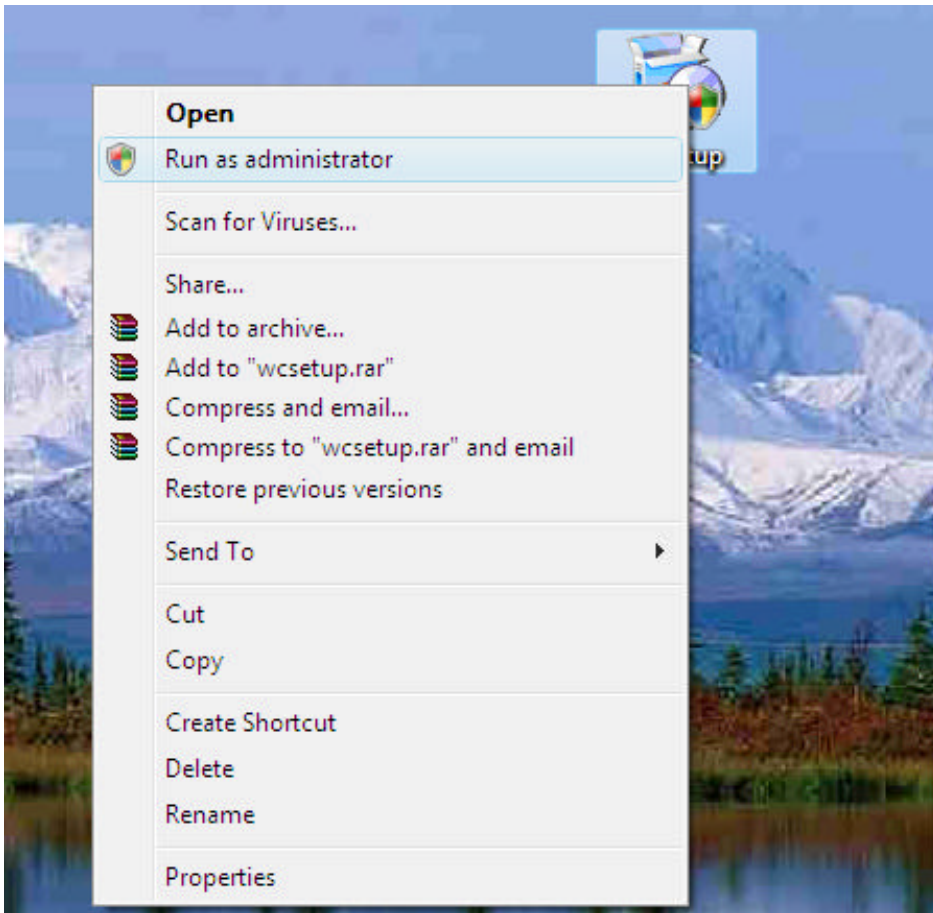
3. After clicking on the “Save” button, you will then be notified when your download is completed:



4. Display your desktop and you will see the wcsetup download file.



5. Right click on the icon and select “Run as administrator” as shown below:



Follow the download prompts and install WorkCenter.

Microsoft Vista Computer Users: ONCE YOU HAVE COMPLETED THE DOWNLOAD OR IF YOU HAVE ALREADY INSTALLED WORKCENTER AND DID NOT FOLLOW THE STEPS OUTLINED ABOVE, WE RECOMMEND THE FOLLOWING:

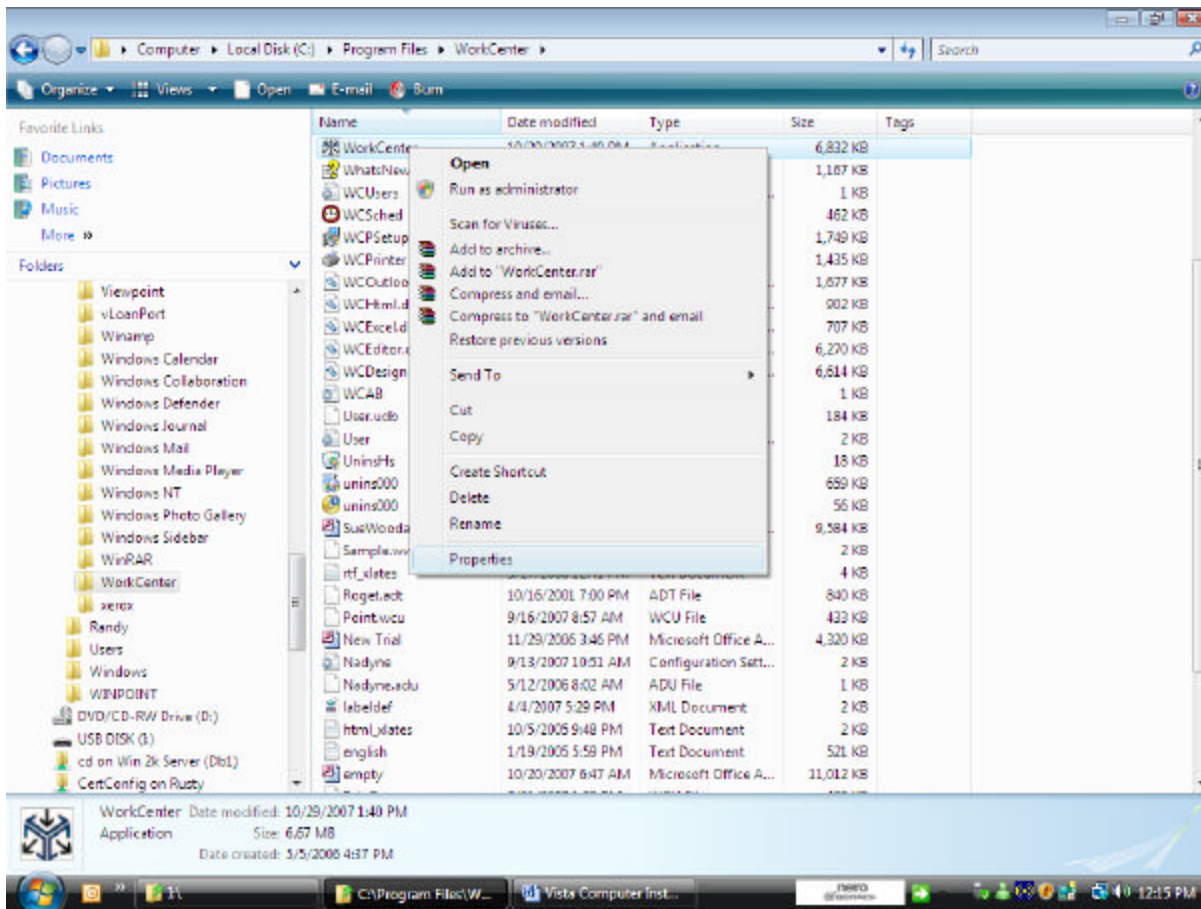
1. Navigate to your directory containing your WorkCenter files. If you have selected the default settings when installing WorkCenter, that directory will be: **C:\Program Files\WorkCenter:**

Once in that directory, right click on the WorkCenter.exe file and select "Properties"

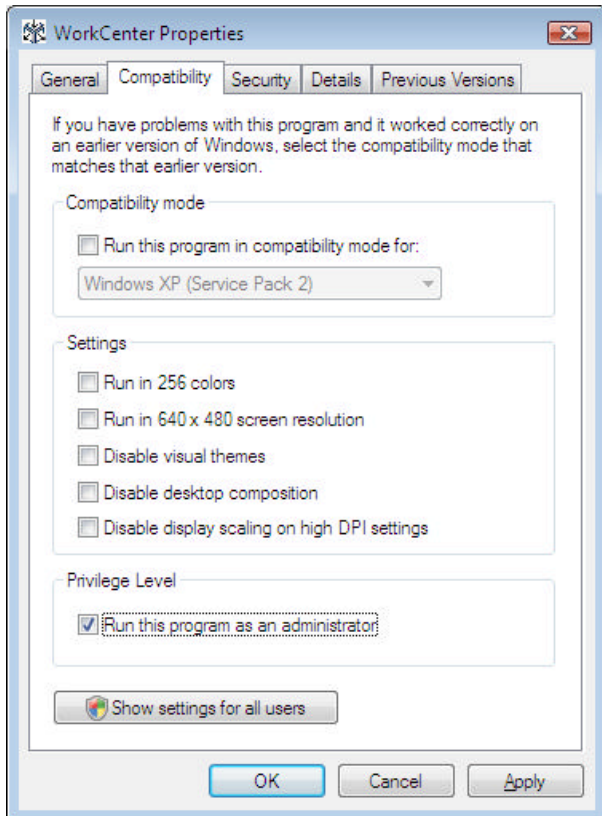


WorkCenter.exe

6,825 KB



2. This screen view will appear. Click on the “compatibility” tab and then click the box “Run Program as administrator”. Save the view.



3. To complete the process, right click on the WorkCenter.Exe file and run as administrator.

